

SCIENCE
FROM SCIENTISTS®



SCIENCE FROM SCIENTISTS • 2024-2025

Our Impact in Schools and Communities



For over 23 years, Science from Scientists (SciSci) has revolutionized STEM education through its In-School Module-Based (ISMB) STEM Enrichment Program, bringing real-life scientists into classrooms to make STEM engaging, relatable, and accessible. During the 2024-2025 academic year, SciSci impacted over 10,600 students across 84 schools in Massachusetts, Minnesota, and California.

Our impact speaks volumes: in May 2025, 87% of surveyed teachers stated that their students saw themselves as more capable of doing science and were more excited to learn science a result of participating in ISMB. Further, 97% of teachers reported that SciSci provided a learning experience that otherwise would not have happened.

This report highlights the achievements of our ISMB program, Grade 2 full science curriculum, out-of-school STEM initiatives, and donor programs.

As we enter FY26, a time of uncertainty due to changes happening at the State and Federal levels with regards to various education policies, we want to thank our donors, partner schools, teachers, and the SciSci team for your continued dedication to empowering the next generation through quality STEM education! Onward!

Erika Ebbel Angle

Erika Ebbel Angle
FOUNDER AND EXECUTIVE DIRECTOR



MORE THAN
30,000
Students Served Across All
SciSci Programming
—
2024-2025



Overview of Our Reach in 2024-2025

In-School Module-Based (ISMB) Program

Half-Year To Year-Long Program

10,565 grade 3-8 students and
431 teachers from **84 schools**

Student Demographics:

- 75%** US ethnic/racial minority
- 59%** economically disadvantaged
- 30%** multilingual students
- 16%** students with disabilities

Grade 2 Full Science Curriculum with Scientist Educators

Half-Year To Year-Long Program

544 grade 2 students and
27 teachers from **8 schools**

SciSci developed **8 mini-units (32 lessons)**, each with 3 hours of teacher-led and 1 hour of SciSci-led lessons, aligned with state and national science standards

School and Community STEM Experiences

Single-Day and Multi-Day Programs

13,503 youth engagements at **SciSci events**

Scientist Educators delivered **1-4 activities per youth** in schools and communities

Our ISMB Impact: 2024–2025



A year of engagement — over 10,500 students served with ISMB!



SciSci’s award-winning In-School Module-Based (ISMB) STEM Enrichment Program sends two real scientists or engineers into classrooms every other week during school hours. This means that every student in participating classrooms actively engages in exciting hands-on, minds-on learning that sparks curiosity, builds teamwork, and inspires critical thinking and problem solving. ISMB has shown measurable impact by raising standardized test scores, enhancing STEM skills and confidence, and building awareness of and interest in STEM careers.

OVERALL ISMB IMPACT FOR 2024-2025

SCHOOLS

84

STUDENTS

10,565

TEACHERS

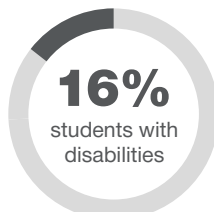
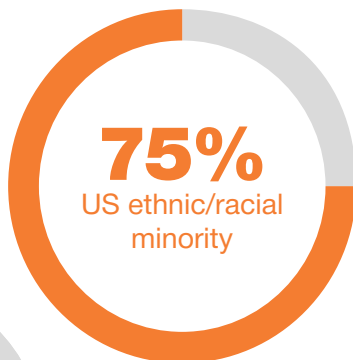
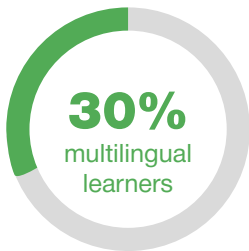
431

SCISCI CONTACT HOURS*

130,855

**Each ISMB student participated in, on average, about 12 hours of SciSci programming.*

OVERALL ISMB STUDENT DEMOGRAPHICS WE SERVED:



How we measure impact

To understand our impact, we use data from a combination of sources to measure change in student knowledge, behavior, interests, and attitudes. Because teachers are so important to student learning, we also explore the impact of our program on teacher attitudes, behavior, and professional growth.

1. **Teacher surveys**
2. **Pre/post quizzes**
3. **Matched-pairs analysis of standardized test scores**
4. **Anecdotal and qualitative information**

Student Impact Data

Teacher surveys

Compared to BEFORE Science from Scientists programming, partner teachers report that their students:

87%

have increased STEM confidence

students see themselves as more capable of doing science

87%

are more engaged in science learning

students are more excited to learn science methods and concepts

83%

have increased science knowledge and skills

students better understand science concepts

79%

have greater STEM career interest, awareness, and confidence

students believe they could work in STEM someday

SURVEY RESPONDENTS: 119 TEACHERS



+30%

Pre/Post Quizzes

During the 2024-2025 school year, SciSci administered pre/post quizzes for eleven of our ISMB lesson concepts to 994 fourth and fifth grade students in 46 classrooms, for a total of 1,228 pre/post comparisons.

Overall, the percentage of students demonstrating conceptual understanding **increased by 30%** from before to after the SciSci lesson.



+10%

Matched pairs analysis of standardized test scores

In 2020, SciSci conducted a matched pairs study of science standardized test scores for a sample of fifth graders who participated in ISMB relative to a comparison group of students who did not participate.

Analysis showed that students who had participated in our program **scored 10% higher** than their peers who did not receive SciSci's program. These higher test scores were consistent across all demographic subgroups.

Here's what teachers have to say about our ISMB program:

"We love having Science from Scientists as a partner and consistently see the benefit that the partnership has on students."

Students love Fridays when the scientists are at our school. They look forward to working with the SciSci Scientist Educators and have built relationships with them. Students are more confident in science and are excited to learn it. The feeling in the building around science is very positive because students connect it to the fun and hands-on experiences.

Since working with SciSci, our science MCA scores have also improved. Our students are more confident when it comes to science. They often say things like, "We learned this in Science from Scientists"."

— ELEMENTARY TEACHER, MN

"As a special education class, my students don't have many opportunities to learn science and have hands-on activities to go along with it as well. Having SciSci has provided my students with opportunities to access grade-level science curriculum and actively engage in these activities.

My students look forward to SciSci weekly, and many have expressed that it's their favorite subject when previously they didn't even have science as a subject. This also opens a door for my students to possibly have career in the STEM field in the future."

— ELEMENTARY TEACHER, CA

Teacher Impact Data

Teacher surveys

On the 2024-2025 ISMB Teacher Survey, teachers reported that:

97%

SciSci provided their students with a learning experience that otherwise would not have happened.

86%

the multi-visit nature of SciSci programming is important to the learning experience.

84%

their students get more science as a result of SciSci programming by filling gaps in the curriculum.

75%

getting ideas from watching SciSci Educators teach their students is an important aspect of our program.

SURVEY RESPONDENTS: 119 TEACHERS



89.7

Net Promoter Score (NPS)

Teachers were asked: On a scale of 0 to 10, how likely is it that you would recommend Science from Scientists programming to other teachers?"

For the past two years, teachers gave Science from Scientists a Net Promoter Score around 82. After the 2024-2025 school year, gave SciSci an **all-time high NPS of 90!**

Here's what a teacher has to say about our ISMB program:

"The SciSci experience has been incredibly valuable to me as an educator. Watching SciSci's Scientist Educators model hands-on, inquiry-based science instruction gave me new tools and strategies to bring back to my own classroom. I learned how to guide students in asking deeper questions, support them in making evidence-based claims, and create space for every student to feel like a scientist — regardless of ability or background.

Their approachable and inclusive teaching style boosted not only my students' confidence, but mine as well. I now feel more prepared and excited to lead STEM activities that are engaging, meaningful, and accessible. SciSci didn't just support my students — it helped me grow as a science teacher, too!"

— ELEMENTARY TEACHER, MA

Full Science Curriculum: Grade 2 Impact



SciSci's Grade 2 Full Curriculum offers schools a complete, ready-to-implement science program that includes lesson plans, hands-on materials, kit storage/delivery, and visits from two SciSci Scientist Educators. The full curriculum includes 8 mini-units (32 lessons), each with 3 hours of teacher-led and 1 hour of SciSci-led lessons through which students spark their curiosity and confidence while engaging in hands-on science that meets NGSS and state science standards. All second grade classrooms in the Revere Public Schools participated in this first full year.

OVERALL GRADE 2 FULL CURRICULUM IMPACT FOR 2024-2025

SCHOOLS	8
STUDENTS	544
TEACHERS	27
SCISCI CONTACT HOURS*	4,352

*Each student participated in 8 hours of SciSci-led lessons.

Teacher surveys

On the 2024-2025 Grade 2 Teacher Survey, teachers reported that:

88%

students have increased science knowledge and skills

students better understand science concepts

75%

students are more engaged in science learning

students are more excited to learn science methods and concepts

88%

teachers feel better equipped

teachers have more tools, strategies, or ideas to use in their science teaching

88%

students have increased confidence

students see themselves as more capable of doing science

SURVEY RESPONDENTS: 8 TEACHERS



THANK YOU

Thank you to the generous support of our donors to help make Grade 2 curriculum possible.



ENDEAVOR Education

Special thank you to:

KARLENE & PETER FRENCH | DOUG & CAROLYN KOHRS

California Region

Nowhere in the U.S. are the STEM statistics more dichotomous than in California. While California has nearly 900,000 STEM jobs accounting for more than 13% of the nation’s overall STEM-related workforce, only 34.6% of students placed at or above basic proficiency in STEM based on results from the 2024 National Assessment of Educational Progress (NAEP). More rigorous STEM programming for all elementary and middle school students is necessary and is why SciSci has served the Bay Area since 2014.




California office

533 Airport Blvd
Suite 135
Burlingame, CA 94010

ph: (617) 314-7773

e: california@sciencefromscientists.org

CALIFORNIA SCHOOL COMMUNITIES WE SERVE:		CALIFORNIA SCHOOL DEMOGRAPHICS:
<p>Belmont (1 school) Pacifica (1 school) Redwood City (3 schools) San Jose (10 schools) San Mateo (2 schools) South San Francisco (1 school)</p> <p>One California public school teacher shared: <i>“One of my quietest students lit up with excitement during a SciSci activity, confidently explaining their observations to the class for the first time – an inspiring moment that showed the power of hands-on science.”</i></p>		<div style="display: flex; flex-direction: column; align-items: center;"> <div style="display: flex; align-items: center; margin-bottom: 10px;"> <div style="background-color: #f47b20; border-radius: 50%; width: 40px; height: 40px; display: flex; align-items: center; justify-content: center; margin-right: 10px;"> 86% </div> <div> <p>US ethnic/racial minority</p> </div> </div> <div style="display: flex; align-items: center; margin-bottom: 10px;"> <div style="background-color: #1f77b4; border-radius: 50%; width: 40px; height: 40px; display: flex; align-items: center; justify-content: center; margin-right: 10px;"> 53% </div> <div> <p>Economically disadvantaged</p> </div> </div> <div style="display: flex; align-items: center; margin-bottom: 10px;"> <div style="background-color: #2ca02c; border-radius: 50%; width: 40px; height: 40px; display: flex; align-items: center; justify-content: center; margin-right: 10px;"> 31% </div> <div> <p>Multilingual learners</p> </div> </div> <div style="display: flex; align-items: center;"> <div style="background-color: #7f7f7f; border-radius: 50%; width: 40px; height: 40px; display: flex; align-items: center; justify-content: center; margin-right: 10px;"> 12% </div> <div> <p>Students with disabilities</p> </div> </div> </div>

California regional impact for 2024-2025

PROGRAM	SCHOOLS	STUDENTS	TEACHERS	CONTACT HOURS*
ISMB	18	3,164	96	41,272

*Number of students multiplied by the number of class visits from Scientist Educators.

MAJOR SUPPORTERS OF SCISCI’S CALIFORNIA PROGRAMMING INCLUDE:



THE MATTHEW KELLY FAMILY FOUNDATION



MARY A. CROCKER TRUST
established 1889

Massachusetts Region

The need for STEM graduates particularly impacts Massachusetts because more than 40% of all employment in the Commonwealth revolves around innovation industries such as clean energy, information technology, defense, and advanced manufacturing, according to the Massachusetts' Plan for Excellence in STEM Education. SciSci is proud to serve students in the Boston Area since 2002.

One Revere Public Schools teacher shared:

"We have a few students who have not had the opportunity for in-depth hands-on learning in science and really benefited from this program. Additionally, many of the multilingual students and students with disabilities in our classroom felt proud of themselves after their success with completing activities in this program."



Massachusetts office

**New address as of 8/1/24*

16 Tower Office Park
Woburn, MA 01801

ph: (617) 314-7773

e: massachusetts@sciencefromscientists.org

MASSACHUSETTS SCHOOL COMMUNITIES WE SERVE:		MASSACHUSETTS SCHOOL DEMOGRAPHICS:
<ul style="list-style-type: none"> Beverly (1 school) Boston (5 schools) Boxford (1 school) Charlestown (1 school) Dorchester (3 schools) Everett (1 school) Jamaica Plain (2 schools) Lynn (1 school) Malden (5 schools) Peabody (7 schools) Quincy (1 school) Reading (1 school) Revere (6 schools) Worcester (2 schools) 		<ul style="list-style-type: none"> 65% US ethnic/racial minority 57% Economically disadvantaged 33% Multilingual learners 22% Students with disabilities

Massachusetts regional impact for 2024-2025

PROGRAM	SCHOOLS	STUDENTS	TEACHERS	CONTACT HOURS*
ISMB	37	3,657	191	54,112
GRADE 2	6**	513	25	4,104

*Number of students multiplied by the number of class visits from Scientist Educators. **Each school participated in 8 mini-units.

MAJOR SUPPORTERS OF SCISCI'S MASSACHUSETTS PROGRAMMING INCLUDE:



Minnesota Region

In 2015, the Bureau of Labor Statistics named Minnesota the fastest-growing state in the nation for technology jobs. Many professional trade associations in the Minnesota technology sectors report future workforce shortages in the tens of thousands over the next decade. Yet, concurrently, data from ACT college testing in 2017 indicates that not enough Minnesota students are equipped for these STEM opportunities - only 24% of the 60,000 students tested met the ACT benchmark for college readiness in STEM, and only 17% planned to pursue a STEM major or career and had a measured interest score supporting that choice. SciSci has served the greater Minneapolis-St.Paul Area since 2016.



Minnesota office

9001 E. Bloomington Fwy
Suite 139
Bloomington, MN 55420

ph: (617) 314-7773

e: minnesota@sciencefromscientists.org

MINNESOTA SCHOOL COMMUNITIES WE SERVE:		MINNESOTA SCHOOL DEMOGRAPHICS:
<p>Bloomington (3 schools) Brooklyn Center (1 school) Brooklyn Park (3 schools) Columbia Heights (1 school) Maplewood (2 schools) Minneapolis (5 schools) New Hope (1 school) Otsego (1 school) Richfield (1 school) St. Cloud (1 school) St. Paul (10 schools)</p> <p>One St. Paul elementary teacher shared: <i>"I like how they bring in real scientists who have experience in many different fields of science like geology, physics, and more. The students love learning about the different fields and they always ask a lot of questions."</i></p>		<ul style="list-style-type: none"> 74% US ethnic/racial minority 67% Economically disadvantaged 27% Multilingual learners 15% Students with disabilities

Minnesota regional impact for 2024-2025

PROGRAM	SCHOOLS	STUDENTS	TEACHERS	CONTACT HOURS*
ISMB	29	3,744	144	35,471
GRADE 2	2**	31	2	62

*Number of students multiplied by the number of class visits from Scientist Educators. **Each school participated in 2 mini-units.

MAJOR SUPPORTERS OF SCISCI'S MINNESOTA PROGRAMMING INCLUDE:



Other School Program Impact

Sparking curiosity and learning in communities with scientist-led STEM experiences. Over 13,600 youth and families served during the 2024-2025 academic year!



STEM tabling experiences

During the 2024-2025 academic year, SciSci's hands-on STEM tabling activities and demonstrations were featured at 10 Boston Red Sox's games and STEM Day at Fenway Park, STEM Day at the MN State Fair, STEM Day at the MN Capitol, the Pasifika STEAM Fair, California SciencePalooza, and Minnesota's Children's Museum, along with other school and community STEM festivals and events. STEM tabling events offer a fun way to spark curiosity and excitement about science, technology, engineering, and math for audiences of all ages through interactive engagement with scientific concepts.



Outside-of-school time

SciSci's Out-of-School time programming during the 2024-2025 academic year included a science theater event at the Fox Theatre and STEM Day at Fenway Park, 25 library events, as well as after-school programming with 9 area schools. These hands-on, engaging activities are designed for a more relaxed, creative environment, fostering curiosity and critical thinking in a safe and enjoyable setting.



STEM Discovery Days

STEM Discovery Days allow schools to try our ISMB program for a single day and are great ways to fill curriculum gaps and provide an on-campus alternative to field trips. Students experience hands-on, minds-on lessons that are taught by our Scientist Educators and aligned with state and NGSS standards. This program benefits schools by increasing student confidence and interest in STEM, inspiring teachers to see how fun and impactful science learning can be for their students!



Summer programming

Just because the school year is over, doesn't mean that the learning has to end. SciSci continues to spread the love of science through the summer and this year provided summer school and vacation camp programming at 15 locations throughout California, Minnesota, and Massachusetts. This year we also added week-long STEM events to Parks and Rec programming in Massachusetts and California.

Donor Highlights



Pro sports: Boston Red Sox events

SciSci's 2025 "Science, Senses, and Sports" collaboration with Collegium Pharmaceutical featured three unique, baseball-themed science activities at 10 Red Sox games at Fenway Park. Nearly 40 Collegium volunteers worked alongside SciSci's Scientist Educators to deliver engaging, quick experiences like Fenway Fingertips, Red Sox Reaction Time, and Prism Pitching to approximately 4,500 youth and families.



Corporate employee-led fundraiser

A very special thank you to the Verve Therapeutics team for their generosity in hosting an annual fundraiser auction so that more students can experience SciSci's In-School Module-Based (ISMB) STEM Enrichment program! Their committee volunteers work months and countless hours to curate an amazing and impactful event. Thank you!



Community partnership programming

Science from Scientists partnered with Nan Fung Life Sciences Real Estate (NFLSRE), their SEWIT-ESG group, tenants, and the Condon Community Center in Boston to relaunch the Summer Series, bringing hands-on STEM opportunities to local youth while engaging tenant volunteers in meaningful community impact. Across three workshops, a total of 68 students explored topics such as Genes & Germs, Body Signal Sleuths, and an Engineering Challenge, each customized to reflect the expertise of participating tenants. Volunteer scientists, engineers, and staff mentored students through activities and connected the lessons to real-world research and careers through lab and site tours. This partnership provided valuable STEM access for students and meaningful engagement for tenants eager to give back to their community.



Bring your child to work day

In partnership with the Broad Institute, Science from Scientists provided two full-day STEM experiences this year where employees enrolled their children in hands-on workshops that connected directly to the science their parents do at work. Each visit engaged 65–70 students who rotated through four morning stations — DNA Extraction, Chromatography Investigation, Infectious Disease, and Experimenting with the Brain — with each activity offering an interactive takeaway. In the afternoon, all students came together for the Medicine Mission Engineering Challenge, a team-based activity to design and test solutions to safely deliver a "medicine drop." The day concluded with students showcasing their learning in a poster-style presentation, giving parents the chance to celebrate their children's accomplishments.



Employee Engagement



483
VOLUNTEERS

Kit Building Events

Gather your team for a good cause — to build SciSci STEM lesson kits for elementary and middle school children!

In 2024-2025, approximately **483 corporate volunteers** across **18 businesses** came together to make hands-on STEM kits to engage youth ages 7-14. SciSci distributes these STEM kits to youth in our ISMB program and at community events.



STEM Spark Days

DONOR BENEFIT

New this year, STEM Spark Days offer organizations a unique opportunity to demonstrate their commitment to STEM education and community impact. During these events, real scientists and trained staff volunteers lead interactive, hands-on STEM lessons designed for elementary and middle school students, creating unforgettable “spark” moments of discovery. Spark Days provide meaningful employee engagement opportunities, strengthen community visibility, and allow SciSci’s corporate partners to see firsthand how their support directly benefits local youth through fun, inspiring, and educational experiences.



1,105
YOUTH

STEM Spark Days

SCHOOL BENEFIT

For schools, STEM Spark Days are a perfect option for STEM nights, open houses, or book fairs — and a great way to encourage parent involvement.

This year SciSci hosted STEM Spark Days at **six schools in California** and **one school in Massachusetts**, bringing hands-on STEM learning to **over 1,100 students!**

SCIENCE FROM SCIENTISTS

Demo-in-a-Box

Murata - Atlanta Science Festival

In FY24, SciSci partnered with Murata to design an interactive STEM experience for the Atlanta Science Festival. Using one of Murata's existing circuit activity stations as the foundation, SciSci created a multi-station activity for participants to learn how power is generated, explore the efficiency of LED bulbs, and leave with practical tips for reducing electricity use at home.

Following the success of the first event, Murata sought to elevate the experience for the next year by building custom boards dedicated to each station. SciSci led the development of two new circuit boards that demonstrated the power required for incandescent bulbs compared to LEDs. By tailoring each board to a single learning goal, we delivered a cleaner, more engaging experience. The booth upgrade was completed with new pull-up vinyl banners, creating a polished and professional display for FY25.



Xcel Energy - Minnesota State Fair

SciSci educators designed a hands-on game to represent the electrical power needs of a fictional city.

SciSci educators designed a hands-on activity that used weight to represent the wattage needed to power a fictional city. Participants added renewable energy sources to the game board and removed an equivalent amount of fossil fuel, while ensuring the city still had enough power. Each 3D-printed game piece was weighted to reflect its megawatt value, and placing new pieces on the board changed the digital scale readout in real time. This engaging game design allowed participants to see the direct impact of renewable energy adoption. Xcel Energy debuted the activity at the Minnesota State Fair — where kids were so captivated, parents often had to drag them away.

A very special thank you to the St. Thomas Academy Innovation Center for their help developing and 3D printing the game board and game pieces.



SCIENCE FROM SCIENTISTS

2024-2025 Corporate and Foundation Donors and Sponsors

\$100k+



\$50k+



MATTHEW KELLY FAMILY FOUNDATION

\$25k+



LAWRENCE J. & ANNE RUBENSTEIN CHARITABLE FOUNDATION



\$10k+



ANONYMOUS DONOR



\$5k+



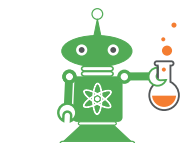
Morgan Stanley



Western Digital



PAULA ROSE FOUNDATION



SCIENCE FROM SCIENTISTS®

MA · CA · MN

sciencefromscientists.org

info@sciencefromscientists.org

[@SciScientists](https://www.instagram.com/SciScientists)



Thank You



Secret Science Club fundraiser

On May 7th, we held our annual Secret Science Club fundraiser at Endicott College's beautiful Misselwood venue in Beverly, MA. The night brought together educators, students, supporters, and community leaders to celebrate the impact of SciSci's programming. The evening featured creative STEM-themed activities, inspiring speeches from teachers and students, hands-on experiments led by SciSci Scientist Educators, and a lively SciSci-themed Family Feud game. The event struck a balance of celebration and urgency, highlighting both the successes of SciSci's mission and the challenges posed by increased funding competition, paused corporate philanthropy, and broader economic pressures. Special guests included State Representative Tom Walsh, who expressed his support for SciSci's work in Peabody schools, and the presentation of the 2025 Trail Blazer Award to Verve Therapeutics and longtime SciSci advocate Elisa LaPlante.



INSPIRE Awards

On April 17th, we held the first INSPIRE Awards at the Fairview Crystal Springs Golf Club in Burlingame, CA. This new event was created to recognize outstanding individuals in the San Francisco Bay Area and Silicon Valley who have inspired and served as a role model in their community. The evening was filled with wonderful conversations, lasting connections, and shared love of making a difference in our community.

SciSci presented awards to four inspiring honorees:

- Lauren Foote, Synopsis Outreach Foundation (CEO)
- Lisa Hall, SafeBase (Chief Information Security Officer)
- Dr. Steve Herrod, Juxtapose (Partner) and Lanai (Co-Founder)
- Chloe Jian Ma, Arm (Vice President of China GTM)



Online & Amazon wishlist donors

A special thank you to all donors who have supported SciSci by making online contributions or purchasing items from our Amazon wishlists. Every dollar given and every item donated directly equips our Scientist Educators with the tools they need to bring hands-on STEM learning to students and advance our mission. Every little bit makes a difference.



Volunteers

During the 2024-2025 school year, **709 volunteers** offered their help in the classroom, at community events, building kits, and more. Their generous gifts of time **totaled 2,131 volunteer hours** across all three regions.

SCIENCE FROM SCIENTISTS

Learn More

Ways to support SciSci:



SCAN HERE

- Volunteer with us
- Host a STEM kit building event at your office
- Recommend SciSci to your company's philanthropy program
- Make a tax-deductible donation through our website, DAF, or employer match program
- Purchase items needed on our Amazon Wishlist

How to contact SciSci:

phone: (617) 314-7773

web: sciencefromscientists.org

email: info@sciencefromscientists.org

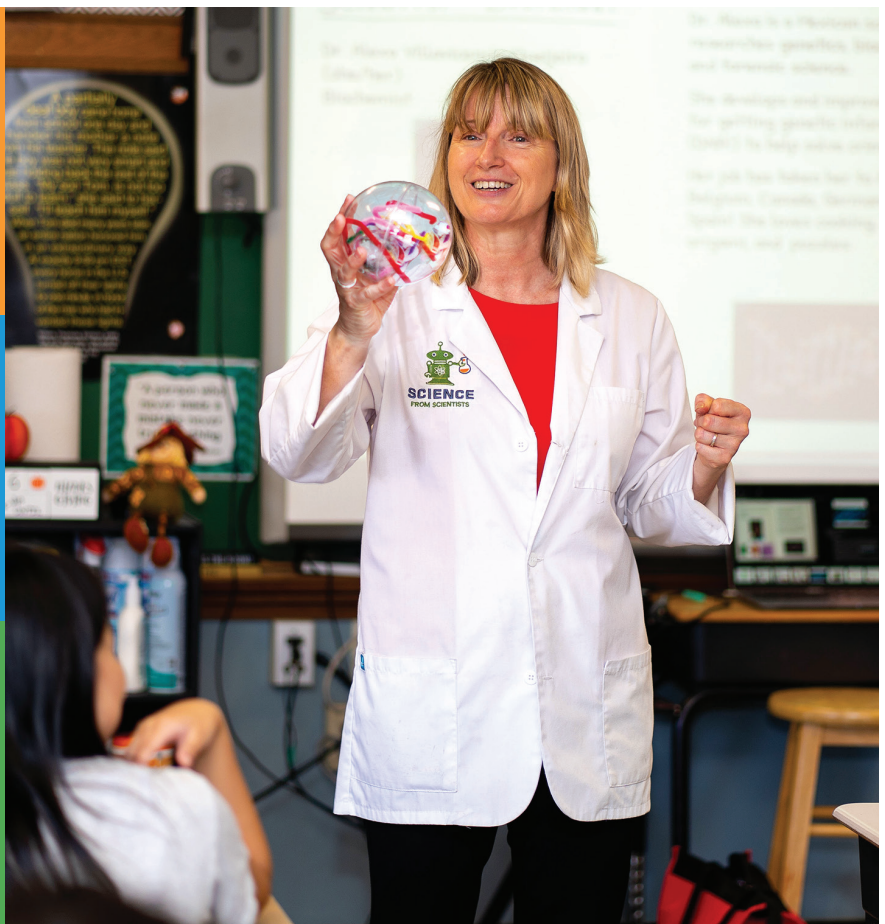
social: [@SciScientists](https://www.instagram.com/SciScientists)



Massachusetts
16 Tower Office Park
Woburn, MA 01801

California
533 Airport Blvd
Suite 139
Burlingame, CA 94010

Minnesota
9001 E Bloomington Frwy
Suite 139
Bloomington, MN 55420



Science from Scientists is a 501(c)(3) nonprofit organization. Tax ID: 20-0792574

MA · CA · MN | sciencefromscientists.org info@sciencefromscientists.org [@SciScientists](https://www.instagram.com/SciScientists)